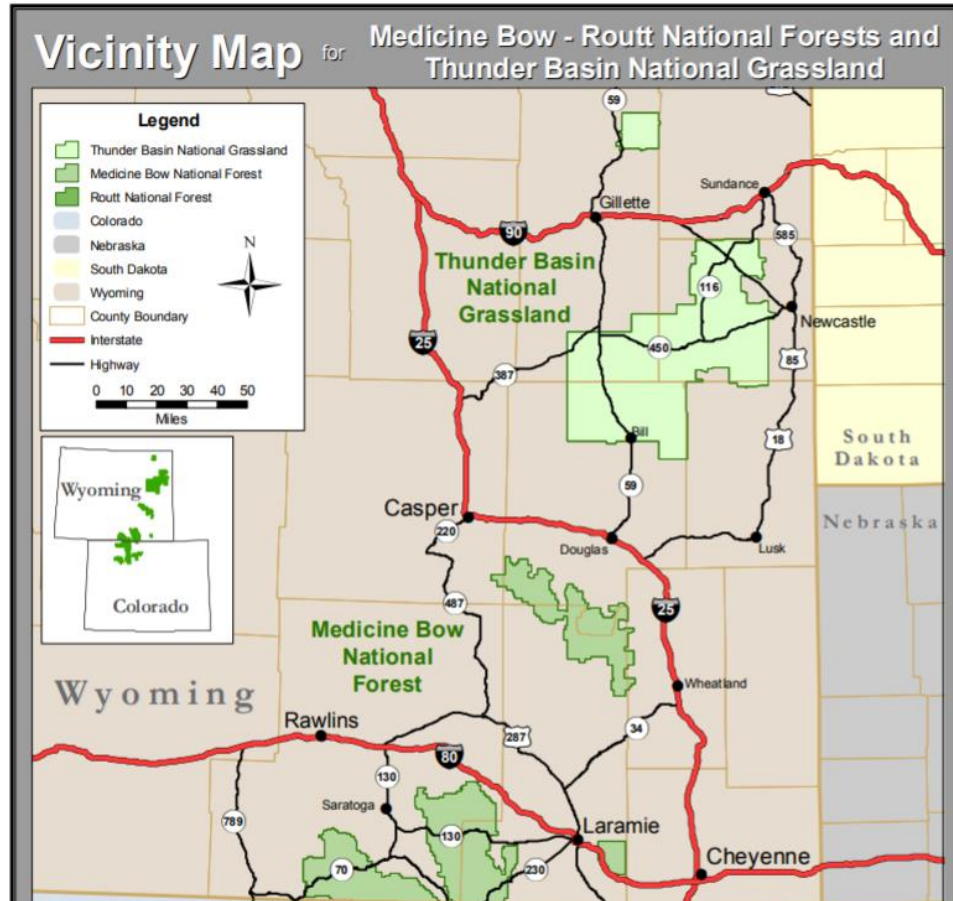


Data Set #1:

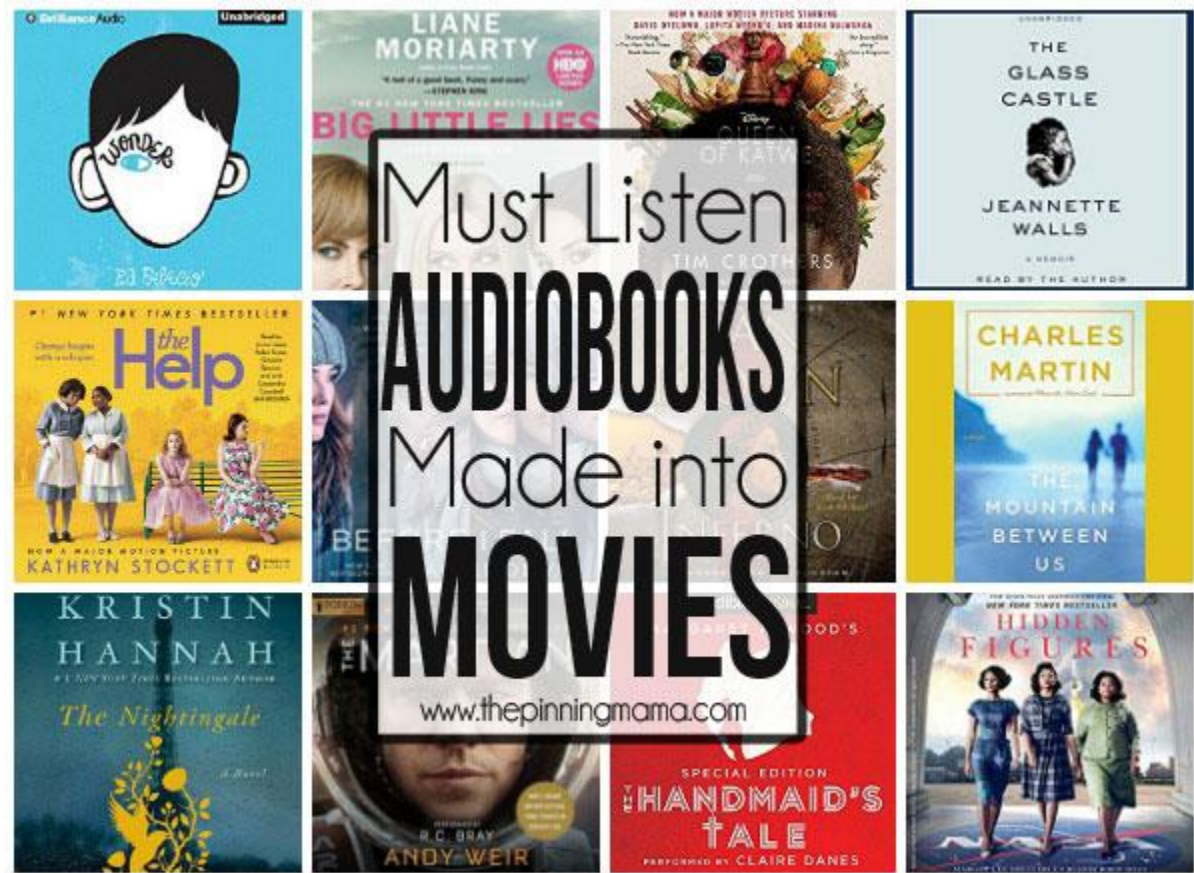
A Study of Antelope in the Thunder Basin



| Available Data For Thunder Basin National Grassland | | | |
|--|-------------------------------|---|---|
| Spring Fawn Count (per 100) | Annual Precipitation (inches) | Winter Severity (on a scale from 1 mild-5 severe) | Size of the Adult Population the following year (per 100) |
| 43 | 9.2 | 2 | 74 |
| 37 | 8.7 | 3 | 80 |
| 21 | 7.2 | 4 | 67 |
| 41 | 8.5 | 2 | 90 |
| 34 | 9.6 | 3 | 75 |
| 16 | 6.8 | 5 | 61 |
| 47 | 9.7 | 1 | 94 |
| 30 | 7.9 | 3 | 73 |

Data Set #2:

Hollywood Movies: Books That Were Turned into Movies



| Available Data | | | |
|---|-----------------------------------|------------------------------------|-----------------------------|
| Books That Were Turned into Movies | | | |
| First year box office earnings (millions) | Total production costs (millions) | Total promotional costs (millions) | Total book sales (millions) |
| 85.1 | 8.5 | 5.1 | 4.7 |
| 106.3 | 12.9 | 5.8 | 8.8 |
| 50.2 | 5.2 | 2.1 | 15.1 |
| 130.6 | 10.7 | 8.39999999 | 12.2 |
| 54.8 | 3.1 | 2.9 | 10.6 |
| 30.3 | 3.5 | 1.2 | 3.5 |
| 79.4 | 9.2 | 3.7 | 9.7 |
| 91 | 9 | 7.6 | 5.9 |

Data Set #3:

Basketball Statistics



| Available Data Basketball Statistics | | | | |
|---|------------------|---|---|--------------------------------------|
| height in feet | weight in pounds | percent of successful field goals (out of 100 attempted) | percent of successful free throws (out of 100 attempted) | average points scored per game |
| 6.8 | 225 | 44.2 | 67.2 | 9.2 |
| 6.3 | 180 | 43.5 | 79.7 | 11.7 |
| 6.4 | 190 | 45.6 | 76.1 | 15.8 |
| 6.2 | 180 | 41.6 | 65.1 | 8.6 |
| 6.9 | 205 | 44.9 | 90 | 23.2 |
| 6.4 | 225 | 43.1 | 78 | 27.4 |
| 6.3 | 185 | 48.7 | 77.1 | 9.3 |
| 6.8 | 235 | 46.9 | 7.5 | 16 |

Data Set #4:

Criminal Activity



| Available Data Criminal Activity | | | | |
|--|---|---|--|---|
| total overall reported crime rate per 1 million residents | reported violent crime rate per 100,000 residents | annual police funding in dollars per resident | % of people 25 years+ with 4 yrs. of high school | % of 16 to 19- year-olds not in high school and not high school graduates |
| 478 | 184 | 40 | 74 | 11 |
| 494 | 213 | 32 | 72 | 11 |
| 643 | 347 | 57 | 70 | 18 |
| 341 | 565 | 31 | 71 | 11 |
| 773 | 327 | 67 | 72 | 9 |
| 603 | 260 | 25 | 68 | 8 |
| 484 | 325 | 34 | 68 | 12 |
| 546 | 102 | 33 | 62 | 13 |

Data Set #5:

Health Care



| Available Data Health Care | | | |
|----------------------------------|--|--|--|
| death rate per 1000 residents | doctor availability per 100,000 residents | hospital availability per 100,000 residents | annual per capita income in thousands of dollars |
| 8 | 78 | 284 | 9.1 |
| 9.3 | 68 | 433 | 8.7 |
| 7.5 | 70 | 739 | 7.2 |
| 8.89 | 96 | 1792 | 8.9 |
| 10.19 | 74 | 477 | 8.3 |
| 8.3 | 111 | 362 | 10.9 |
| 8.8 | 77 | 671 | 10 |
| 10.7 | 82 | 329 | 8.7 |